

Château Cardou



Heated Swimming Pool, Flood-lit Tennis Court, Sleeps 21

5 Double Bedrooms (4 en-suite), 4 Twin-bedded Rooms

3 Single Dressing-room Bedrooms, Grand Piano

Entrance Hall, Drawing Room, Dining Room, Large Play Room

Kitchen with Dishwasher, Fridge/Icemaker, Microwave etc

Broadband Internet, Maid Service included, Chef if required

Château Cardou is set in a magnificent position in the middle of its 125 acre estate, commanding the Vallée d'Or (the Golden Valley). It is a perfect size for a holiday with family and friends.

The Château is surrounded by its own land and enjoys wonderful views across and up its valley (just South of the river Lot) and for a distance of over 20 km to the hilltop bastide town of Monflanquin. The approach is up a long private drive, through a plantation of firs and tiny hardwood trees amongst beautiful mature chestnut, specimen firs, cherry and ash.

Bedrooms

There are three double bedrooms on the ground floor each with en-suite bath or shower rooms; off these bedrooms are 3 dressing rooms which may be used as children's bedrooms. Downstairs there is a twin-bedded room with its own shower room.

From the dining hall, the stairs lead to the top floor where there are two delightful tower rooms each with a double bed and its own bathroom. These rooms have magnificent views up and down the valley to the east and west. Then there is a huge attic playroom with a lofty ceiling, supported by lovely oak beams, off which are 3 further small twin bedded rooms and additional showers and lavatories. See the floor plan showing bedroom layout.

Kitchen, Dining Hall and Drawing Room

The kitchen has two electric ovens, a microwave, an American fridge, a dishwasher, plenty of china and glass, and a full array of pots and pans. A French chef can be organised if required. The dining hall has a massive stone chimney breast, in which you can have a roaring log fire, and a baronial table which seats up to 16. A stereo hi-fi and a grand piano are provided for entertainment. The drawing room has an open fire, television and video player. There is table tennis in the cellar.

Swimming Pool and Tennis Court

The heated swimming pool (5.5 x 11m) lies in a lavender scented sun trap beside two pretty stone barns and is enclosed by a safety fence. The poolside terrace includes a stone table and barbecue. The flood-lit Tennis Court is the other side of the stone barn.



Maid Service

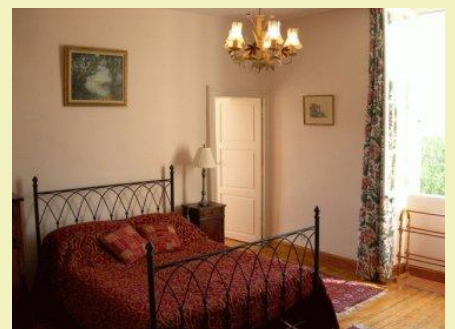
Maid service is included three mornings a week to keep the house clean. If you wish to have additional maid service this may be arranged on request to the staff at an hourly rate. If required, we can provide details of local baby-sitters to enable you to make your own arrangements.

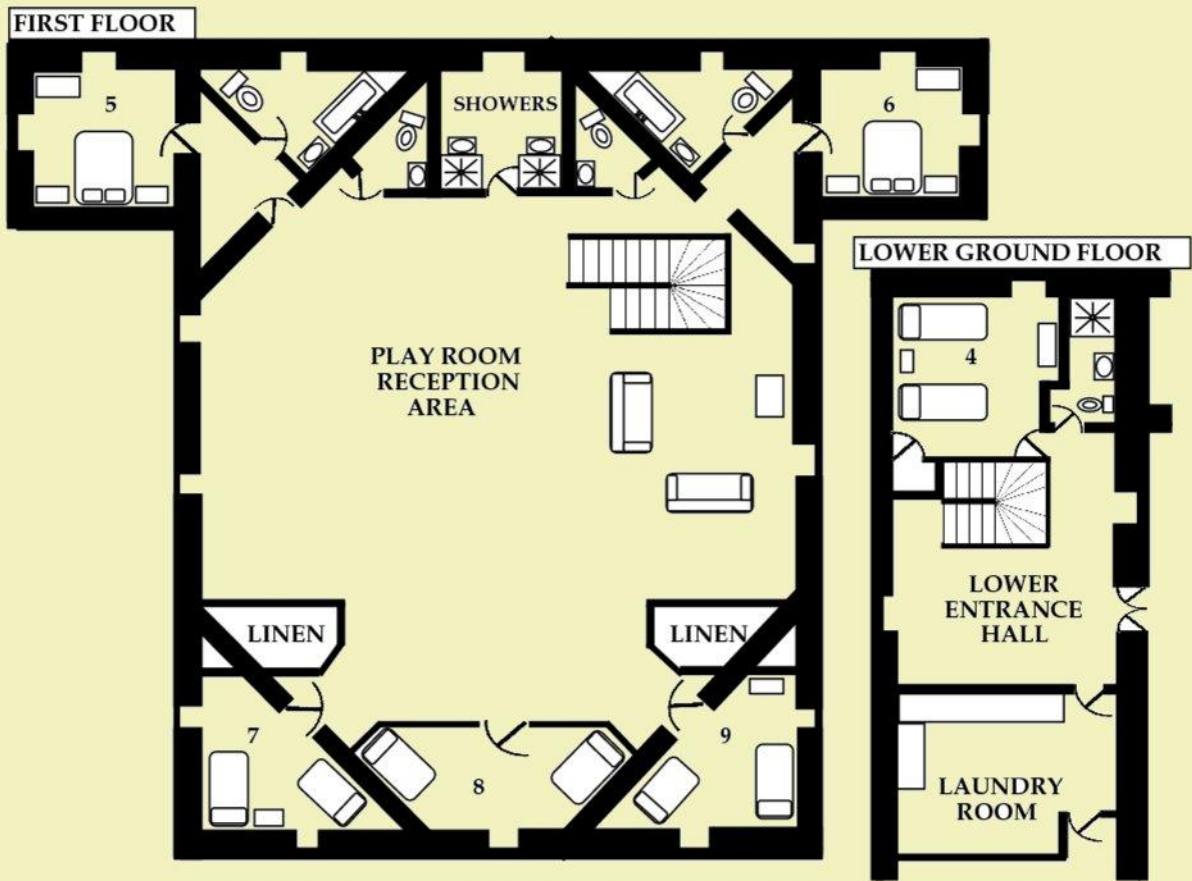
Linen and Towels are provided, but please bring your own swimming towels.

The château is built over a vast cellar in which there is a laundry room, with automatic washing machine.

Communications

Telephone is metered at cost and a wireless internet connection is available free of charge. A fax machine is provided. Please read the meter on arrival and departure. A deposit will be requested prior to your holiday. This is fully refunded less any expenses or breakages at the end of your holiday.





William & Joanna Stuart-Bruges



**Sandford House, Kingsclere, Newbury, Berkshire, England. RG20 4PA.
Tel: +44 (0)1635 291942 (& fax), Mobile: +44 (0)7787 550413**

Web: <http://chateaudevie.online.fr>

E-mail: jm.stuartb@gmail.com